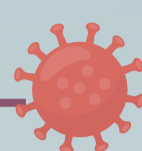


WHAT WE KNOW SO FAR ABOUT THE EPIDEMIOLOGY OF COVID-19

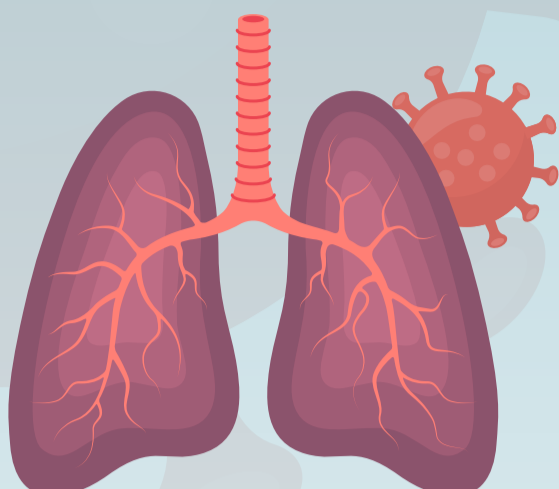
DECEMBER
2019

First reported: Wuhan (Heibei province, China)



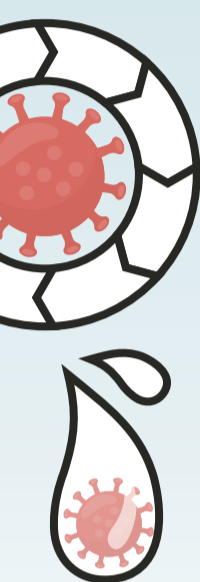
Causative organism

Severe acute respiratory syndrome coronavirus-2 (SARS-CoV-2)



Countries, areas, or territories affected

(as of June 22, 2020)



Mode of transmission

Human-to-human, through

- Close contact with infected individuals
- Inhalation of virus-laden respiratory droplets released by an infected individual while sneezing or coughing
- Inhalation of smaller virus-laden fluid droplets or high-concentration aerosols released by infected individuals while talking and breathing
- Contact with surfaces containing virus-laden droplets released by infected individuals
- Possible vertical transmission from infected pregnant mother to infant

34 – 59
YEARS

Median age of infected individuals

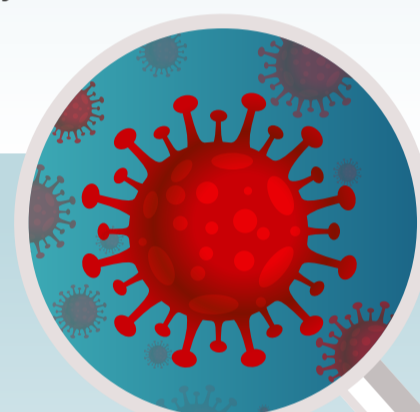


Most prevalent comorbidities

- Hypertension
- Diabetes
- Cardiovascular disease
- Respiratory disorders
- Obesity



Comparative risk of severe disease/death among populations



Individuals aged ≥60 years	Men	Individuals with comorbidities	Immunocompromised individuals
Children, adults aged <60 years	Women	Individuals without comorbidities	Immunocompetent individuals



Estimated case fatality rate

(ratio of deaths to confirmed cases)

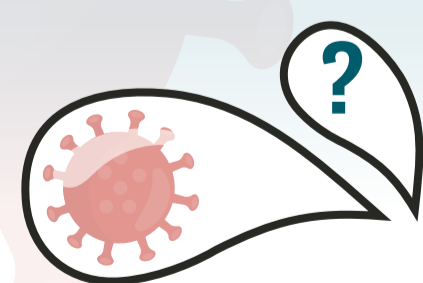
Reported to vary widely across regions and stages of the pandemic

0.7% – 8.4%

Measures crucial to curbing transmission



- Contact tracing,
- Isolation of individuals who may have come in contact with infected people
- Adequate physical distancing
- Proper wearing of masks
- Hand hygiene



Important challenge in curbing transmission

Potential lack of public awareness about viral transmission from pre-symptomatic and asymptomatic individuals, which may lead to lack of caution or compliance with recommended preventive measures

To learn more, read regularly updated COVID-19-related literature summaries and access a global clinical trial database available at covid19.researcher.life.



Want to get weekly updates on new research literature related to COVID-19? [Sign up now!](#)